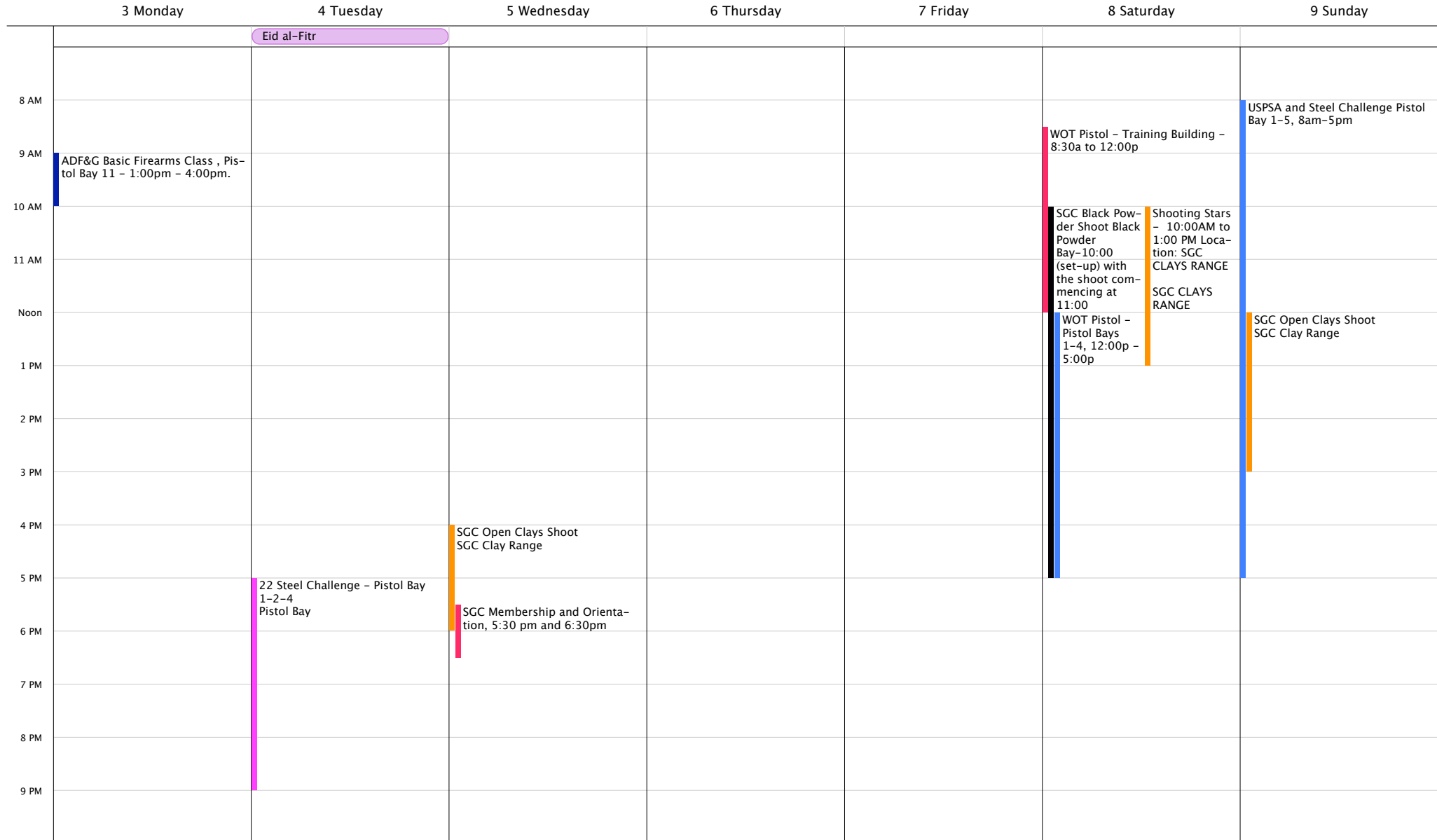


# June 3 to June 9, 2019

Week 23

| June 2019 |    |    |    |    |    |    | July 2019 |    |    |    |    |    |    |
|-----------|----|----|----|----|----|----|-----------|----|----|----|----|----|----|
| M         | T  | W  | T  | F  | S  | S  | M         | T  | W  | T  | F  | S  | S  |
|           |    |    |    |    | 1  | 2  | 1         | 2  | 3  | 4  | 5  | 6  | 7  |
| 3         | 4  | 5  | 6  | 7  | 8  | 9  | 8         | 9  | 10 | 11 | 12 | 13 | 14 |
| 10        | 11 | 12 | 13 | 14 | 15 | 16 | 15        | 16 | 17 | 18 | 19 | 20 | 21 |
| 17        | 18 | 19 | 20 | 21 | 22 | 23 | 22        | 23 | 24 | 25 | 26 | 27 | 28 |
| 24        | 25 | 26 | 27 | 28 | 29 | 30 | 29        | 30 | 31 |    |    |    |    |

- SGC TACTICAL Range
- SGC Rifle Range
- SGC Training Building
- SGC CLAY RANGE
- SGC
- SGC Pistol Bay 4
- SGC Pistol Bay 3
- SGC Pistol Bay 2
- SGC Pistol Bay 1
- SGC Black Powder Range
- SGC Pistol Bay 9
- SGC Pistol Bay 8
- SGC Pistol Bay 7
- SGC Pistol Bay 6
- SGC Pistol Bay 5
- SGC CLAYS COMM
- Pistol Bay # 1-4
- Pistol Bay # 1-3
- SGC PISTOL BAY 11
- SGC Pistol Bay 10
- US Holidays



# June 10 to June 16, 2019

Week 24

| June 2019 |    |    |    |    |    |    | July 2019 |    |    |    |    |    |    |
|-----------|----|----|----|----|----|----|-----------|----|----|----|----|----|----|
| M         | T  | W  | T  | F  | S  | S  | M         | T  | W  | T  | F  | S  | S  |
|           |    |    |    |    | 1  | 2  | 1         | 2  | 3  | 4  | 5  | 6  | 7  |
| 3         | 4  | 5  | 6  | 7  | 8  | 9  | 8         | 9  | 10 | 11 | 12 | 13 | 14 |
| 10        | 11 | 12 | 13 | 14 | 15 | 16 | 15        | 16 | 17 | 18 | 19 | 20 | 21 |
| 17        | 18 | 19 | 20 | 21 | 22 | 23 | 22        | 23 | 24 | 25 | 26 | 27 | 28 |
| 24        | 25 | 26 | 27 | 28 | 29 | 30 | 29        | 30 | 31 |    |    |    |    |

- SGC TACTICAL Range
- SGC Rifle Range
- SGC Training Building
- SGC CLAY RANGE
- SGC
- SGC Pistol Bay 4
- SGC Pistol Bay 3
- SGC Pistol Bay 2
- SGC Pistol Bay 1
- SGC Black Powder Range
- SGC Pistol Bay 9
- SGC Pistol Bay 8
- SGC Pistol Bay 7
- SGC Pistol Bay 6
- SGC Pistol Bay 5
- SGC CLAYS COMM
- Pistol Bay # 1-4
- Pistol Bay # 1-3
- SGC PISTOL BAY 11
- SGC Pistol Bay 10
- US Holidays

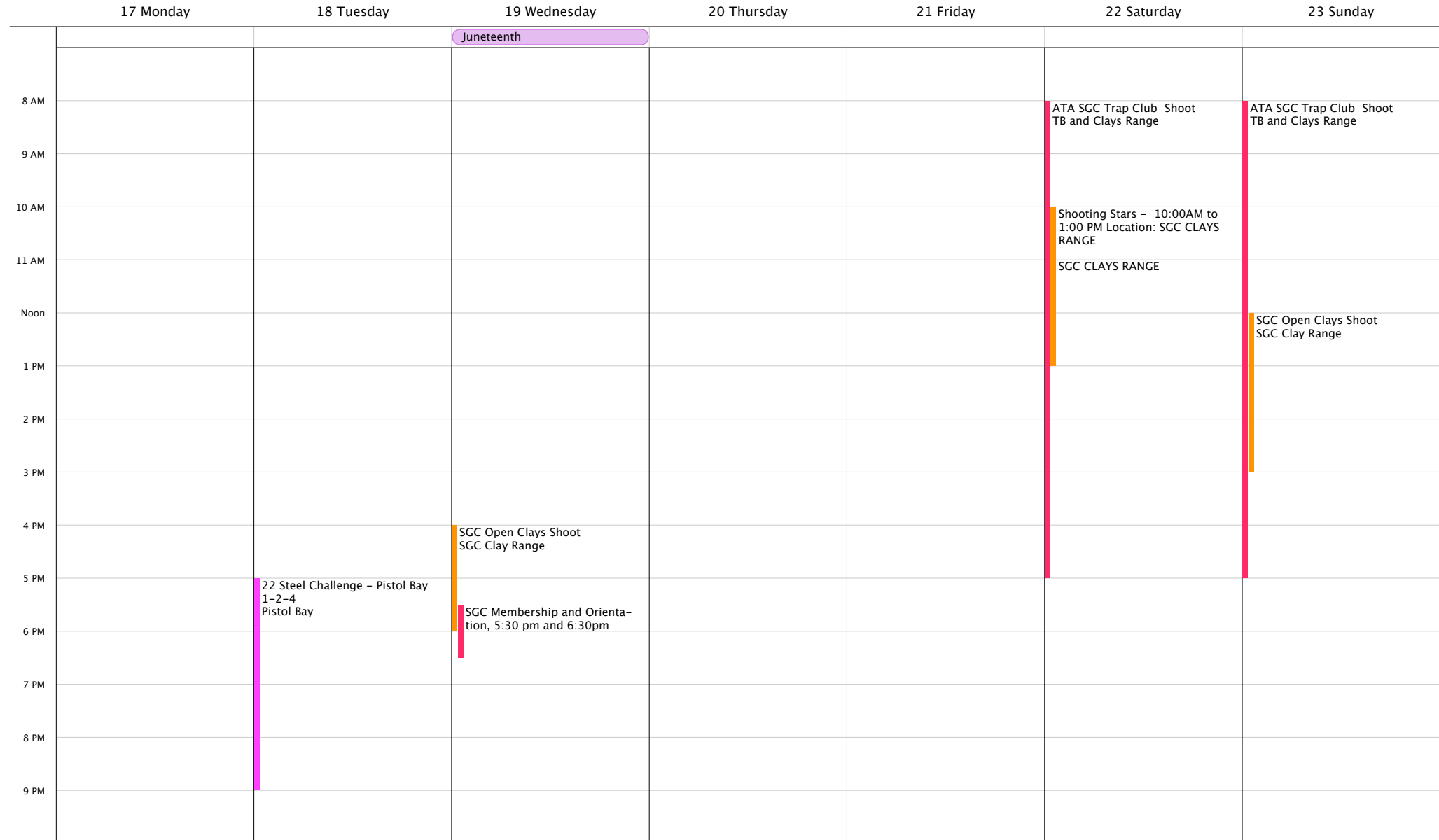
|       | 10 Monday | 11 Tuesday                                       | 12 Wednesday                        | 13 Thursday                                     | 14 Friday | 15 Saturday   | 16 Sunday  |
|-------|-----------|--|-------------------------------------|---|-----------|---|--|
|       |           |  |                                     |   | Flag Day  |   | Father's Day   |
| 8 AM  |           |  |                                     |   |           |   |  |
| 9 AM  |           |  |                                     |   |           |   | SGC Rifle Match 300-600 yrds Starts 9:00am SGC Rifle Range |
| 10 AM |           |  |                                     |   |           | Shooting Stars - 10:00AM to 1:00 PM Location: SGC CLAYS RANGE | Fathers Day - Fun Shoot & BBQ                              |
| 11 AM |           |  |                                     |   |           | SGC CLAYS RANGE   |  |
| Noon  |           |  |                                     |   |           |   |  |
| 1 PM  |           |  |                                     |   |           |   | SGC Open Clays Shoot SGC Clay Range                        |
| 2 PM  |           |  |                                     |   |           |   |  |
| 3 PM  |           |  |                                     |   |           |   |  |
| 4 PM  |           |  | SGC Open Clays Shoot SGC Clay Range | SGC Clays Committee Meeting - Training Building |           |   |  |
| 5 PM  |           | 22 Steel Challenge - Pistol Bay 1-2-4 Pistol Bay |                                     | SGC Board Meeting                               |           |   |  |
| 6 PM  |           |  |                                     |   |           |   |  |
| 7 PM  |           |  |                                     |   |           |   |  |
| 8 PM  |           |  |                                     |   |           |   |  |
| 9 PM  |           |  |                                     |   |           |   |  |

# June 17 to June 23, 2019

Week 25

| June 2019 |    |    |    |    |    |    | July 2019 |    |    |    |    |    |    |
|-----------|----|----|----|----|----|----|-----------|----|----|----|----|----|----|
| M         | T  | W  | T  | F  | S  | S  | M         | T  | W  | T  | F  | S  | S  |
|           |    |    |    |    | 1  | 2  | 1         | 2  | 3  | 4  | 5  | 6  | 7  |
| 3         | 4  | 5  | 6  | 7  | 8  | 9  | 8         | 9  | 10 | 11 | 12 | 13 | 14 |
| 10        | 11 | 12 | 13 | 14 | 15 | 16 | 15        | 16 | 17 | 18 | 19 | 20 | 21 |
| 17        | 18 | 19 | 20 | 21 | 22 | 23 | 22        | 23 | 24 | 25 | 26 | 27 | 28 |
| 24        | 25 | 26 | 27 | 28 | 29 | 30 | 29        | 30 | 31 |    |    |    |    |

- SGC TACTICAL Range
- SGC Rifle Range
- SGC Training Building
- SGC CLAY RANGE
- SGC
- SGC Pistol Bay 4
- SGC Pistol Bay 3
- SGC Pistol Bay 2
- SGC Pistol Bay 1
- SGC Black Powder Range
- SGC Pistol Bay 9
- SGC Pistol Bay 8
- SGC Pistol Bay 7
- SGC Pistol Bay 6
- SGC Pistol Bay 5
- SGC CLAYS COMM
- Pistol Bay # 1-4
- Pistol Bay # 1-3
- SGC PISTOL BAY 11
- SGC Pistol Bay 10
- US Holidays

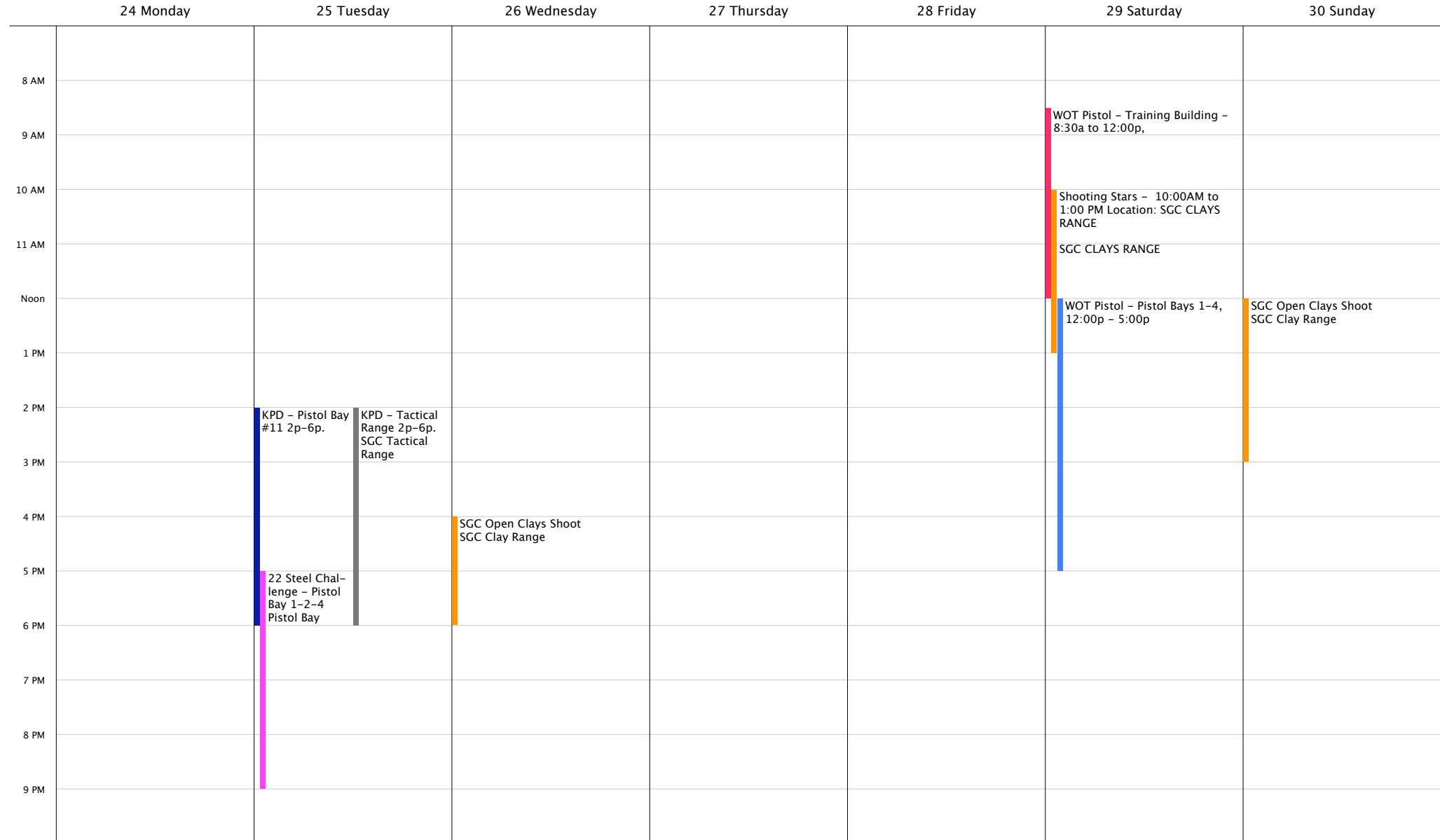


# June 24 to June 30, 2019

Week 26

| June 2019 |    |    |    |    |    |    | July 2019 |    |    |    |    |    |    |
|-----------|----|----|----|----|----|----|-----------|----|----|----|----|----|----|
| M         | T  | W  | T  | F  | S  | S  | M         | T  | W  | T  | F  | S  | S  |
|           |    |    |    |    | 1  | 2  | 1         | 2  | 3  | 4  | 5  | 6  | 7  |
| 3         | 4  | 5  | 6  | 7  | 8  | 9  | 8         | 9  | 10 | 11 | 12 | 13 | 14 |
| 10        | 11 | 12 | 13 | 14 | 15 | 16 | 15        | 16 | 17 | 18 | 19 | 20 | 21 |
| 17        | 18 | 19 | 20 | 21 | 22 | 23 | 22        | 23 | 24 | 25 | 26 | 27 | 28 |
| 24        | 25 | 26 | 27 | 28 | 29 | 30 | 29        | 30 | 31 |    |    |    |    |

- SGC TACTICAL Range
- SGC Rifle Range
- SGC Training Building
- SGC CLAY RANGE
- SGC
- SGC Pistol Bay 4
- SGC Pistol Bay 3
- SGC Pistol Bay 2
- SGC Pistol Bay 1
- SGC Black Powder Range
- SGC Pistol Bay 9
- SGC Pistol Bay 8
- SGC Pistol Bay 7
- SGC Pistol Bay 6
- SGC Pistol Bay 5
- SGC CLAYS COMM
- Pistol Bay # 1-4
- Pistol Bay # 1-3
- SGC PISTOL BAY 11
- SGC Pistol Bay 10
- US Holidays

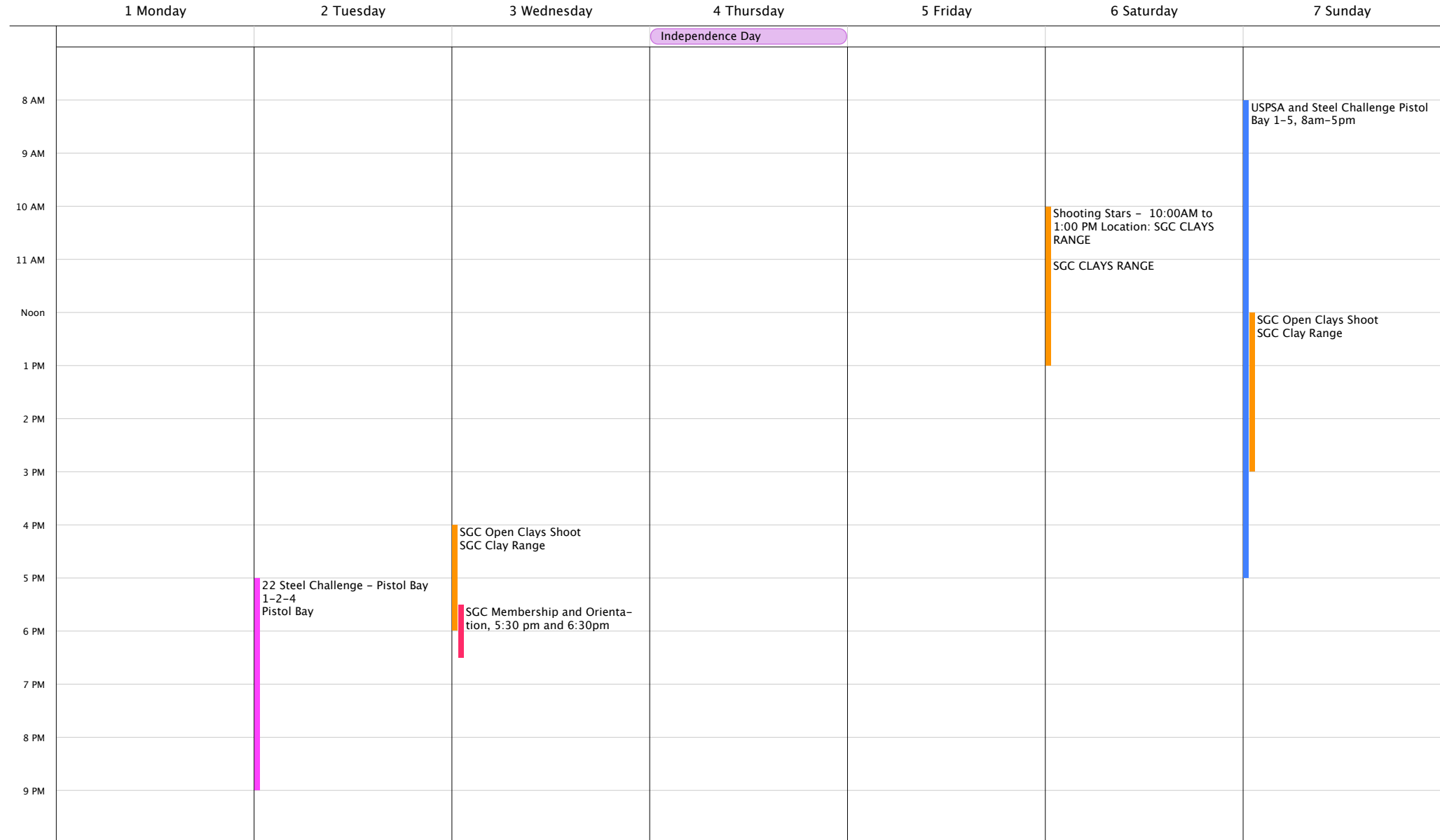


# July 1 to July 7, 2019

Week 27

| July 2019 |    |    |    |    |    |    | August 2019 |    |    |    |    |    |    |
|-----------|----|----|----|----|----|----|-------------|----|----|----|----|----|----|
| M         | T  | W  | T  | F  | S  | S  | M           | T  | W  | T  | F  | S  | S  |
| 1         | 2  | 3  | 4  | 5  | 6  | 7  |             |    |    | 1  | 2  | 3  | 4  |
| 8         | 9  | 10 | 11 | 12 | 13 | 14 | 5           | 6  | 7  | 8  | 9  | 10 | 11 |
| 15        | 16 | 17 | 18 | 19 | 20 | 21 | 12          | 13 | 14 | 15 | 16 | 17 | 18 |
| 22        | 23 | 24 | 25 | 26 | 27 | 28 | 19          | 20 | 21 | 22 | 23 | 24 | 25 |
| 29        | 30 | 31 |    |    |    |    | 26          | 27 | 28 | 29 | 30 | 31 |    |

- SGC TACTICAL Range
- SGC Rifle Range
- SGC Training Building
- SGC CLAY RANGE
- SGC
- SGC Pistol Bay 4
- SGC Pistol Bay 3
- SGC Pistol Bay 2
- SGC Pistol Bay 1
- SGC Black Powder Range
- SGC Pistol Bay 9
- SGC Pistol Bay 8
- SGC Pistol Bay 7
- SGC Pistol Bay 6
- SGC Pistol Bay 5
- SGC CLAYS COMM
- Pistol Bay # 1-4
- Pistol Bay # 1-3
- SGC PISTOL BAY 11
- SGC Pistol Bay 10
- US Holidays



# July 8 to July 14, 2019

Week 28

| July 2019 |    |    |    |    |    |    | August 2019 |    |    |    |    |    |    |
|-----------|----|----|----|----|----|----|-------------|----|----|----|----|----|----|
| M         | T  | W  | T  | F  | S  | S  | M           | T  | W  | T  | F  | S  | S  |
| 1         | 2  | 3  | 4  | 5  | 6  | 7  |             |    |    | 1  | 2  | 3  | 4  |
| 8         | 9  | 10 | 11 | 12 | 13 | 14 | 5           | 6  | 7  | 8  | 9  | 10 | 11 |
| 15        | 16 | 17 | 18 | 19 | 20 | 21 | 12          | 13 | 14 | 15 | 16 | 17 | 18 |
| 22        | 23 | 24 | 25 | 26 | 27 | 28 | 19          | 20 | 21 | 22 | 23 | 24 | 25 |
| 29        | 30 | 31 | 26 | 27 | 28 | 29 | 30          | 31 |    |    |    |    |    |

- SGC TACTICAL Range
- SGC Rifle Range
- SGC Training Building
- SGC CLAY RANGE
- SGC
- SGC Pistol Bay 4
- SGC Pistol Bay 3
- SGC Pistol Bay 2
- SGC Pistol Bay 1
- SGC Black Powder Range
- SGC Pistol Bay 9
- SGC Pistol Bay 8
- SGC Pistol Bay 7
- SGC Pistol Bay 6
- SGC Pistol Bay 5
- SGC CLAYS COMM
- Pistol Bay # 1-4
- Pistol Bay # 1-3
- SGC PISTOL BAY 11
- SGC Pistol Bay 10
- US Holidays

